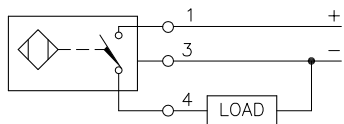


WIRING DIAGRAM

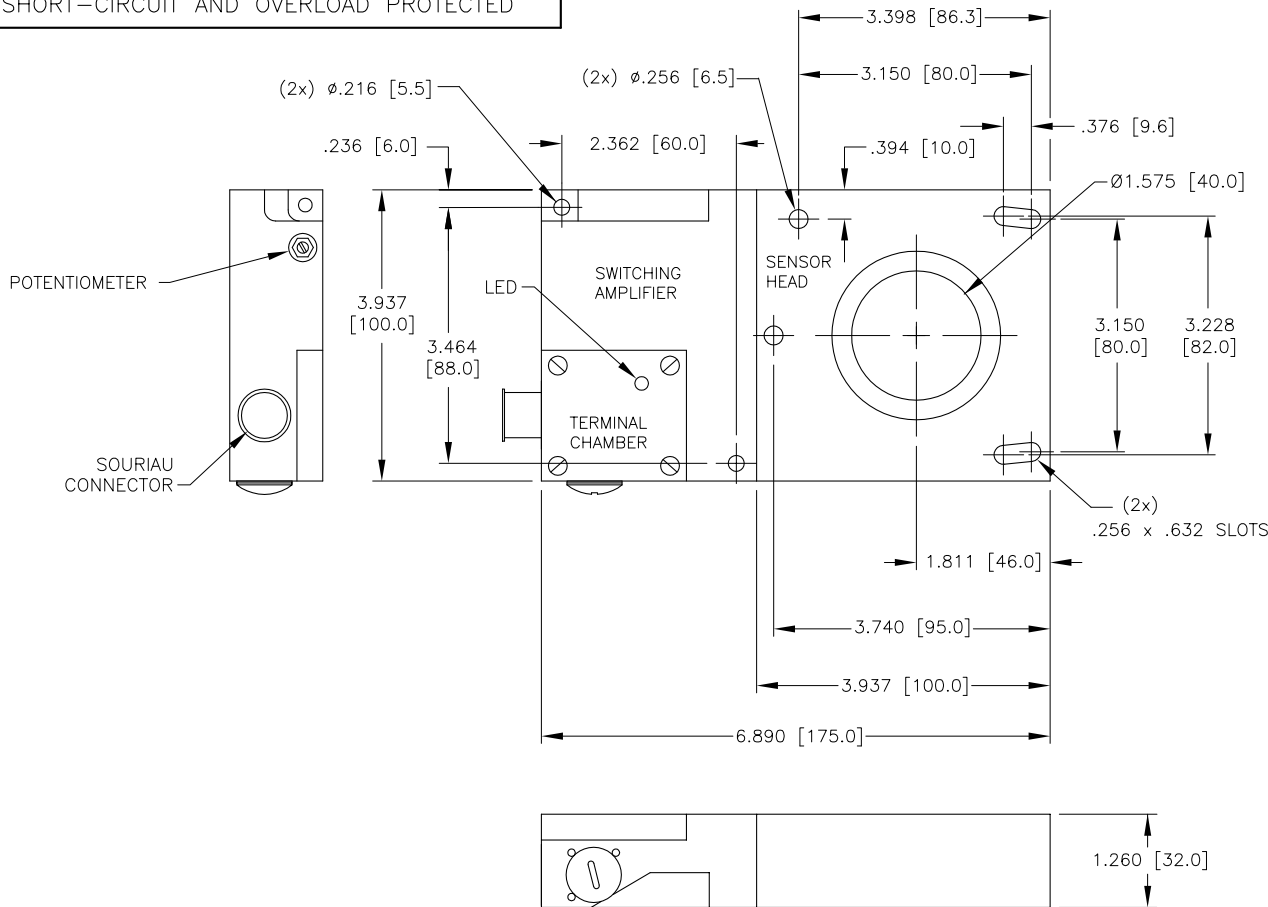


OUTPUT: AP44X

SHORT-CIRCUIT AND OVERLOAD PROTECTED

SPECIFICATIONS

INTERIOR RING DIAMETER	∅40 mm
DIAMETER OF STEEL WIRE	≥ 1.0mm
MIN. REPEAT ACCURACY	≤ 2%
PULSE STOP	≥ 5 ms
HYSTERESIS	3-15%
PULSE LENGTH AT OUTPUT	≥ 100 ms ± 20%
OPERATING TEMPERATURE	-25°C to +70°C (-13°F to +158°F)
RATED OPERATIONAL VOLTAGE	10-55 VDC
RESIDUAL RIPPLE	≤ 10%
DC RATED OPERATIONAL CURRENT	≤ 200 mA
NO-LOAD CURRENT	≤ 20 mA
RESIDUAL CURRENT	≤ 0.1 mA
RATED INSULATION VOLTAGE	≤ 0.5 kV
SHORT-CIRCUIT PROTECTION	INCORPORATED
MAX. VOLTAGE DROP	≤ 1.8 V
REVERSE POLARITY PROTECTION	INCORPORATED
WIRE BREAK PROTECTION	INCORPORATED
OUTPUT FUNCTION	3-WIRE, CHANGE OVER, PNP
MAX. SWITCHING FREQUENCY	≤ 0.008 kHz
HOUSING MATERIAL	PLASTIC, ABS
CONNECTION	SOURIAU
COIL BODY	PLASTIC, ABS
VIBRATION	55 Hz, 1 mm AMPLITUDE (IN ALL 3 PLANES)
SHOCK	30 g, 11 ms
DEGREE OF PROTECTION	IP65
SWITCHING STATUS INDICATION	LED, YELLOW



SOURCE DRAWING - FOR REFERENCE ONLY

RELATED DOCUMENTS 1. 2. 3. 4.	3RD ANGLE PROJECTION 	THIS DRAWING IS PROPERTY OF TURCK INC. USE OF THIS DOCUMENT WITHOUT WRITTEN PERMISSION IS PROHIBITED.		3000 CAMPUS DRIVE MINNEAPOLIS, MN 55441 1-800-544-7769 (763) 553-7300 (763) 553-0708 fax turck.com	
	MATERIAL SEE NOTES	ALL DIMENSIONS DISPLAYED ON THIS DRAWING ARE FOR REFERENCE ONLY	DRFT RDS DSGN	DATE 07/23/08 SCALE NONE	DESCRIPTION NI40R-S32SR-AP44X-S1131
FINISH SEE NOTES	CONTACT TURCK FOR MORE INFORMATION	UNIT OF MEASUREMENT INCH [MILLIMETER]		IDENTIFICATION NO. M1440006	REV A
A DRAWING RELEASE REV DESCRIPTION	RDS 07/23/08 BY DATE ECO NO.	DO NOT SCALE THIS DRAWING		FILE: M1440006	SHEET 1 OF 1

A	DRAWING RELEASE	RDS	07/23/08	
REV	DESCRIPTION	BY	DATE	ECO NO.